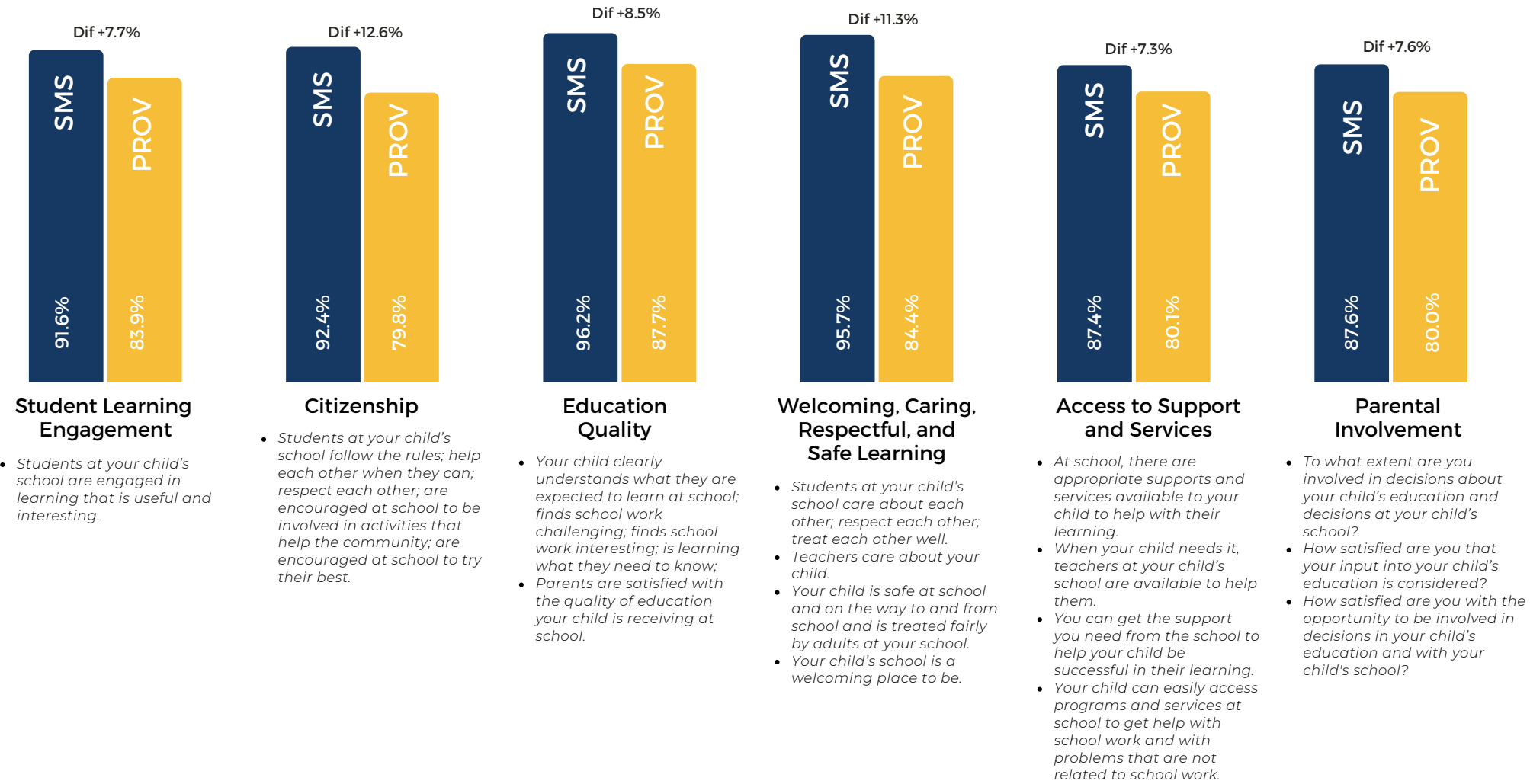




# ALBERTA ASSURANCE ANNUAL EDUCATION RESULTS

Alberta Education Assurance is a set of 12 performance measures calculated by Alberta Education for schools and school boards across the province. Schools and school boards are evaluated based on achievement, improvement, and overall performance.



[Click here for our full Annual Education Results Report](#)

## Faith Survey Results

- 95%

Percentage of students, parents, and teachers who indicate that they are satisfied with the relationship that exists between the school and the local Catholic parish.
- 97%

Percentage of students, parents and teachers who are satisfied with the religious celebrations that are celebrated with the school.
- 97%

Percentage of students, parents and teachers who are satisfied with what is being taught in religious education classes.
- 93%

Percentage of students, parents and teachers who indicate they are satisfied with the level of Catholic faith formation of students at the school.
- 94%

Percentage of students, parents and teachers who indicate they are satisfied with the efforts to live our Catholic Social Teaching at school.

### Insight:

With 97% satisfaction in religious education and 95% in living out Catholic Social Teachings, St. Mary's stands as a vibrant community of faith where students grow in virtue, compassion, and discipleship. These outstanding results affirm that we are forming beautiful children rooted in faith, guided by Gospel values, and inspired to live as Jesus calls them to.

## Insights

- Parental Involvement – 87.9% (Provincial 80%, +5% from last year) - St. Mary's continues to strengthen meaningful partnerships with families, reflected in our 5% growth and achievement of 87.9% in parental involvement - well above the provincial average. This demonstrates that parents feel deeply connected to their children's learning and valued as essential contributors to our school community.
- Welcoming, Caring, Safe & Respectful Learning Environment – 95.7% (Provincial 84.4%) - With an outstanding score of 95.7%, St. Mary's is recognized as a truly welcoming, caring, and safe school where students feel known, loved, and supported - far exceeding provincial results. This highlights our commitment to nurturing the whole child and creating a community where every student feels they belong.
- Education Quality – 96.2% (Provincial 87.7%, up from 94.7%) - Our exceptional score of 96.2% reflects the high level of academic excellence and engaging instruction offered at St. Mary's. Continuous improvement from last year shows our dedication to delivering rich learning experiences that help every child thrive.
- Lifelong Learning – 86.4% (Provincial 80.8%, up from 78.2%) - An increase of over 8% in lifelong learning demonstrates our success in inspiring curiosity, confidence, and a love of learning in our students. Our score of 86.4%, significantly above the provincial average, shows that students feel motivated, capable, and excited about their future.